

DEFIBRILLATORS AND BLEED KITS IN RUSHMOOR

SUMMARY

At the meeting on 7th December, the Council resolved to refer a Notice Of Motion on defibrillators to the Policy and Projects Advisory Panel (PPAB) for consideration:

The Notice of Motion requested that:

- PPAB produce a report into the current accessibility and maintenance of defibrillators and bleed kits in Rushmoor
- Assess the cost commitments in expanding provision of defibrillators and bleed kits in Rushmoor
- Make recommendations for expanding the provision of defibrillators and bleed kits across Rushmoor

This report provides information on the provision and cost of defibrillators and bleed kits. It makes recommendations for future work to enhance accessible defibrillators across Rushmoor to mitigate the dangers of out of hospital cardiac arrests.

RECOMMENDATION:

Funding of up to £10,000 to be assigned from the UKSPF neighbourhood level interventions project to allow the purchase of six Public Access Defibrillators (PADs) in the priority locations identified through the survey and needs assessment.

1. INTRODUCTION - DEFIBRILLATORS & BLEED KITS

- 1.1 A Notice of Motion to Council on 7th December recognised the importance of defibrillators. It identified that the Council would like to build on existing provision and work in collaboration with the voluntary and community sector, businesses and partners to find suitable locations for additional defibrillators and bleed kits where required.

- 1.2 On 13th February PPAB received a presentation from officers and the Artery Project, outlining the existing provision, associated costs and funding opportunities for defibrillators.
- 1.3 It estimated that there were 138 defibrillator units in Rushmoor, (51 in Aldershot and 87 in Farnborough), 30 of which were accessible to the public and available 24/7. It advised that only 95 of these were registered on The Circuit (the National Defibrillator Network used by Emergency Services)
- 1.4 The presentation acknowledged that given not all defibrillators had been registered on the Circuit, the information was not as comprehensive as officers would like. Despite this, the data identified a good level of coverage across the borough but highlighted some potential gaps, particularly in areas of deprivation and areas with a high footfall.
- 1.5 It was also noted that there is very limited knowledge of bleed kits in the borough. Unlike the Circuit for Defibrillators, there is currently no central database for the location of Bleed Kits, however the ambulance service is working on the implementation of a service to register kits.
- 1.6 PPAB agreed that a survey and needs assessment was necessary to provide a more comprehensive local picture and enable a recommendation on further provision. It was agreed that the survey and needs assessment should consider on going costs and training needs.

2. **BACKGROUND**

- 2.1 It is recognised that in the event of an out of hospital cardiac arrest the availability of a defibrillator, prior to the arrival of professional medical help, has a significant effect on the likely survival rate.
- 2.2 Heart and circulatory diseases are strongly associated with health inequalities. A study by the University of York in 2023 (Burgoiné T, 2023), [Automated external defibrillator location and socioeconomic deprivation in Great Britain | Heart \(bmj.com\)](https://www.bmj.com/lookup/doi/10.1136/bmj-2023-074444), showed that people in deprived areas, who are among the communities at the greatest risk of cardiac arrest, are further away from life-saving equipment, highlighting the risk to life and the need for equal access to defibrillators.
- 2.3 To date the Council has allocated £9,656 towards defibrillators via Supporting Communities Grants. In addition, the Council has provided significant officer time, from the Community & Partnerships Team and Legal Team to support local groups who have fundraised independently.
- 2.4 There are existing defibrillators on the following Council buildings:
 - RBC Offices
 - Princes Hall
 - The Meads
 - The Crematorium
 - Aldershot Pools

They are all currently located inside their respective buildings.

3. SURVEY ON DEFIBRILLATORS & BLEED KITS

- 3.1 A borough wide survey was circulated to partners, charities, sports clubs and businesses on Monday 26th February, closing on Friday 8th March. It was also included in the Council's email news, a specific business newsletter and shared widely on social media.

The purpose of the survey was to:

- Enhance the understanding of the location of defibrillators and bleed kits
- Identify the number and location of PADs (Public Access Defibrillators)
- Identify gaps in provision where additional defibrillators may be needed
- Encourage registration of existing defibrillators to the circuit.
- Identify barriers to installing defibrillators/bleed kits.
- Seek permission to plot defibrillators on a map.

A copy of the survey can be found at Appendix A

SURVEY RESULTS

- 3.2 Sixty nine organisations responded to the survey. From those responses, three additional defibrillators have been identified. Following on from the mapping exercise in January where 138 defibrillators were plotted, it is estimated that there are 141 defibrillators in the borough. (Appendix B This map includes all doctors' surgeries and schools in the borough)
- 3.3 Seven additional Public Access Defibrillators were identified – which means that there are a total of 37 Public Access Defibrillators available in the borough 24/7 (Appendix C)
- 3.4 20 responders said they had registered their defibrillator on the circuit. Eight had not registered or were not sure if they had but said they would consider it because of the survey.
- 3.5 Eleven responses identified they would like a defibrillator but identified the following barriers:
- Lack of funds
 - Limited access to premises/don't own the premises
 - I don't know how to get one installed

Of the 11 responses six are in Aldershot and five in Farnborough

- 3.6 The survey indicates that there is sufficient coverage in supermarkets and industrial sites across the borough.

- 3.7 As a result of the survey, Council officers are in discussion with The George Public House in Aldershot Town Centre and the 3rd Farnborough Scouts Group, who have expressed an interest in obtaining a defibrillator and bleed kit respectively. In addition, North Camp Matters Partnership has been in contact with the Council to confirm they have funding in place to install two defibrillators in the area and seek support to identify the most appropriate locations based on the mapping that has taken place.
- 3.8 The survey identified seven bleed kits (Five in Farnborough and two in Aldershot). These are located at schools (3), churches (2), St John's Ambulance and one owned by a community group.

4 NEEDS ASSESSMENT

- 4.1 In addition to the survey, a needs assessment was carried out to further help identify the areas that need a defibrillator.
- 4.2 Using Lower Layer Super Output areas (LSOA's) each area was given a score of 1-5 using the following metrics:
- 2019 Index of Multiple Deprivation (IMD) Score
 - 2019 IMD score for health deprivation and Disability Domain
 - 2021 Census Date - The Number of people aged 65 and over
 - Nature of the place – including:
 - A cluster of shops, cafes, petrol stations restaurants or pubs
 - Community Centre
 - Sports club/playing field/open space
 - Cemetery and or Church
 - Static homes/caravan sites
 - Pharmacies
- 4.3 The needs assessment (Appendix D) identifies the scores for 60 LSOA's. The higher the score, the greater the need for a defibrillator. The data/scores identify town centres and areas of deprivation with the highest scores.

5. LOCATION OF DEFIBRILLATORS & FUTURE PROPOSALS

- 5.1 The survey and needs assessment identified six locations with a gap in provision, where the availability of a defibrillator would significantly increase the chance of survival should anyone suffer a cardiac arrest. In no priority order, these locations are:
- Aldershot Town Centre
 - Farnborough Town Centre
 - Aldershot Park – South of the Ward
 - Fernhill – North of the Ward
 - Cove and Southwood – St Christophers Estate

- Prospect Centre, Cherrywood

Further details are included in Appendix E.

- 5.2 North Town, North Camp and Rowhill also recorded high scores in the needs assessment: However, there are defibrillators in these areas, and it is felt that provision is adequate (especially for North Camp who have already secured funding for an additional two devices)
- 5.3 11 responses to the survey said they would like a defibrillator but faced barriers, either due to lack of funds or lack of premises. The Council is committed to working with local communities and interested parties to identify funding opportunities and is liaising with the organisations who have expressed an interest. Support is being prioritised for The George Public House in Aldershot who are one of the eleven responses and one of our priority areas above.
- 5.4 The Council is also in early discussions with Vivid about a Public Access Defibrillator being located on the outside wall of Totland Concierge.
- 5.5 It is recognised that to increase the number of defibrillators across Rushmoor generally requires significant engagement with local communities and stakeholders. Where possible, community groups must have responsibility of maintenance (including checks) and ownership of a device to ensure a sustainable model.
- 5.6 Making as many existing devices as possible fully accessible to the public will improve our local coverage. Whilst recognising there is a cost implication, it is important to encourage and support communities and businesses, to move defibrillators located inside, to be situated outside and therefore publicly available 24 hours.

6. COSTS AND MAINTENANCE

- 6.1 Typically defibrillators can cost between £800 and £2,500. The current cost of Public Access Defibrillators (PADs) including a suitable public use defibrillator, external cabinet, pads (adult and paediatric) and associated equipment is approximately £1,800 plus VAT plus the additional cost for fitting and installation.
- 6.2 The fitting and installation cost vary significantly depending on the location of the external defibrillator and the distance from the nearest suitable power supply. It is estimated that installation costs are in the region of £600.
- 6.3 Additional costs associated with PADs include regular maintenance checks and routine replacement of the battery and pads, plus additional replacement of the pads if the defibrillator is used.
- 6.4 The ongoing maintenance of a PAD does not require technical expertise. Manufacturer recommended checks include a daily check that the “active status” indicator is green (which can be observed without the need to open

the external box) and monthly checks to ensure the condition of the unit and accessories are intact, the battery and pads remain in date, together with a manually initiated self-test. Additional checks are required every time the defibrillator has been used.

- 6.5 Bleed kits cost in the region of £85 to £200. They have an expiry date, which requires them to be replaced more frequently.
- 6.6 Whilst increasing the number of defibrillators and bleed kits would provide a more comprehensive coverage across the borough, at this time, there is no budget allocated to support either installation or ongoing maintenance.
- 6.7 The Supporting Communities grants has, to date, allocated £9,956 to local groups towards the cost of defibrillators. Whilst the opportunity remains for groups to apply to this fund for new defibrillators the Council may wish to consider a proactive, targeted, approach and utilise UKSPF funds (Community Interventions) to pay for defibrillators and bleed kits in the areas identified by the needs assessment.

7. RECOMMENDATIONS

- 7.1 It is recommended that PPAB consider the following recommendations.
- 7.2 Funding of up to £10,000 to be assigned from the UKSPF neighbourhood level interventions project to allow the purchase of six Public Access Defibrillators (PADs) in the priority locations identified through the survey and needs assessment.

The six areas are:

- Aldershot Town Centre
- Farnborough Town Centre
- Aldershot Park – South of the Ward
- Fernhill – North of the Ward
- Cove and Southwood – St Christophers Estate
- Prospect Centre, Cherrywood

- 7.3 Existing defibrillators, inside Council owned premises at The Meads, Council offices and Princes Hall to be relocated to outside walls to make them permanently accessible to the public. It is estimated to cost approximately £500 to move one defibrillator. The Council's property team will fund the cost of relocating the defibrillators from existing budgets.
- 7.4 The Council to work with communities to encourage community owned defibrillators, located inside, to be relocated on external walls, thereby increasing the number of publicly available defibrillators across the borough. The Council will identify external funding opportunities to support this whilst ensuring community groups have ongoing responsibility and ownership of the device.

- 7.5 The Council to continue discussions with Wel medical in relation to securing six defibrillators at a reduced cost.
- 7.6 Work with partners, in particular The Artery Project and Wel Medical, to enhance CPR skills by providing defibrillator awareness training sessions for key contacts and community groups. This should include raising awareness of defibrillator locations and what to do if you are a bystander when someone has a cardiac arrest. The Council may also wish to consider exploring opportunities for young learners currently involved in The Duke of Edinburgh Award Scheme to be actively involved in the maintenance checks as part of their volunteering element.
- 7.7 The Community Safety Team to continue working with the Police and the Hampshire & Isle of Wight Licensing Officers Group to identify the most suitable locations for additional bleed kits.

8. CONCLUSIONS

- 8.1 Members of PPAB are invited to consider the recommendations in this report in order to formulate a recommendation to Council in line with the Notice of Motion submitted on 7th December.

CONTACT DETAILS:

Emma Lamb – Service Manager Community & Partnerships
Emma.lamb@rushmoor.gov.uk

Sharon Sullivan - Policy Officer
Sharon.sullivan@rushmoor.gov.uk

APPENDIX A – COPY OF THE SURVEY

Defibrillators in Aldershot and Farnborough

Introduction

We would like to understand where defibrillators are in Aldershot and Farnborough and identify places in the community where new ones might be needed.

If you are a representative from a local organisation, business, school or community group we would be grateful if you could take a few minutes to complete the following survey.

The closing date for our survey is Friday 8 March.

To view our consultation survey privacy notice please visit www.rushmoor.gov.uk/consultationprivacynotice.

* 1. Please provide the name of your organisation/company/business/school/group.

* 2. Please provide the postcode for your organisation/company/business/school/group.

* 3. Do you have a defibrillator on your premises?

Yes

No

Defibrillators in Aldershot and Farnborough

* 4. Is the defibrillator accessible for the community/members of the public 24-hours-a-day, 7 days a week?

Yes

No

5. If no, what are the restrictions? For example, the defibrillator can only be used within working hours or opening hours, or only for use by staff as part of medical practice etc.

To understand the coverage of defibrillators in Aldershot and Farnborough, we would like to map where they are. This map will be on our website, as part of a Rushmoor Borough Council committee report.

* 6. Do you consent to your defibrillator being included on this map?

- Yes
 No

The Circuit is the national defibrillator network providing an overview of where you can find defibrillators. At the moment, many defibrillators never get used because emergency services don't know where they are or how to access them. [The Circuit - the national defibrillator network](#).

* 7. Has your defibrillator been registered on the national data base the Circuit?

- Yes
 No
 Not sure

8. If no, will you consider registering your defibrillator with the Circuit?

- Yes
 No
 Not sure

Defibrillators in Aldershot and Farnborough

* 9. Do you think there is a need for a defibrillator at your organisation/company/business/school/group?

- Yes
 No
 Not sure

10. If yes, what are the barriers your organisation/company/business/school/group getting a defibrillator?

- I don't know how to get one installed
 Lack of funds
 Limited access to our premises
 Other (please tell us)

Defibrillators in Aldershot and Farnborough

We are also interested in knowing where bleed kits are located in Aldershot and Farnborough.

A bleed kit is a collection of medical supplies and equipment designed to provide immediate aid to someone with severe bleeding. The kits are intended for use in emergencies until professional medical help arrives.

* 11. Does your organisation/company/business/school/group have a bleed kit?

Yes

No

No, but we know where one is located (please tell us where it is)

12. If we can contact you about your answers, please provide a contact email address.

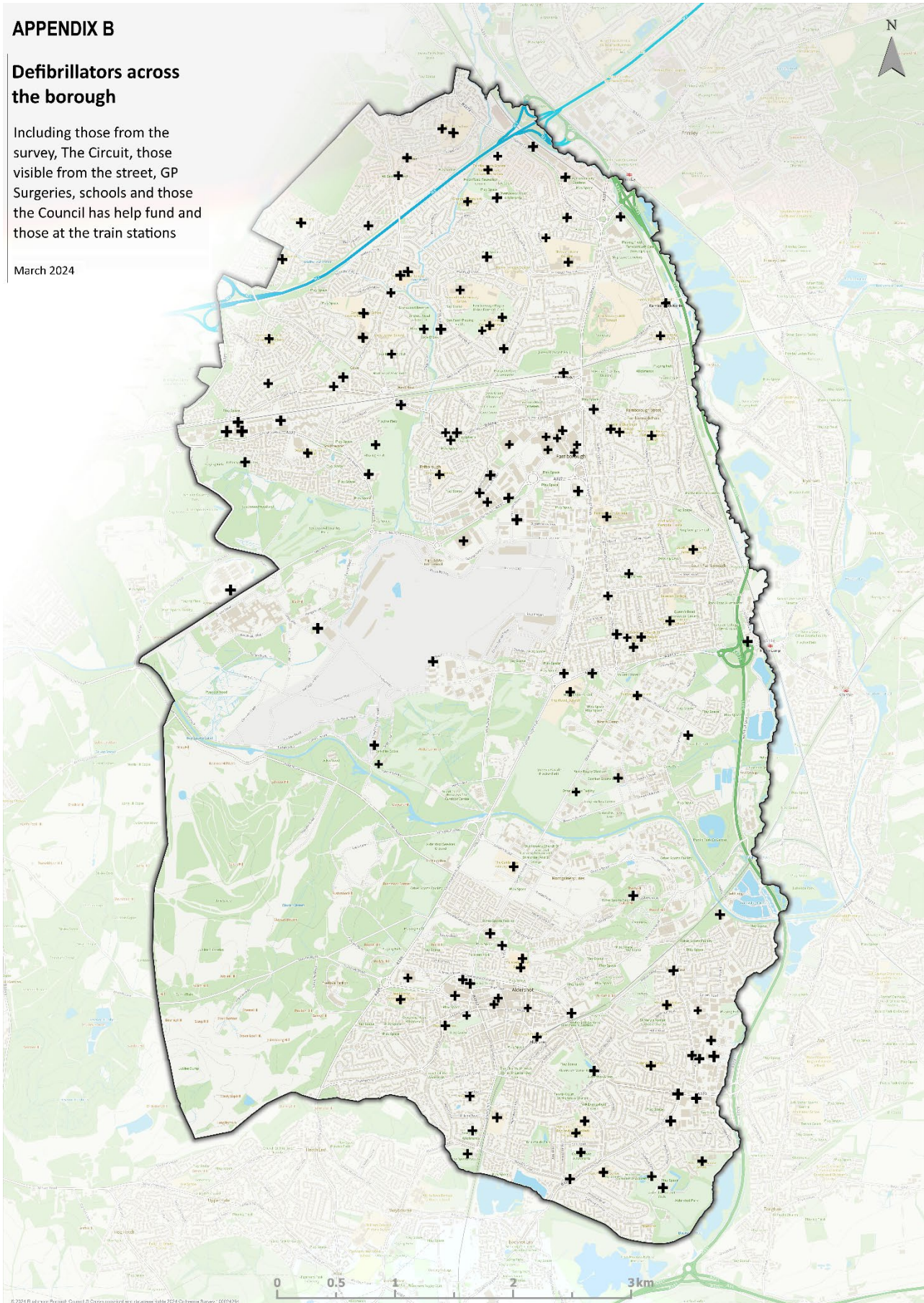
Thank you for taking part in our survey

APPENDIX B

Defibrillators across the borough

Including those from the survey, The Circuit, those visible from the street, GP Surgeries, schools and those the Council has help fund and those at the train stations

March 2024

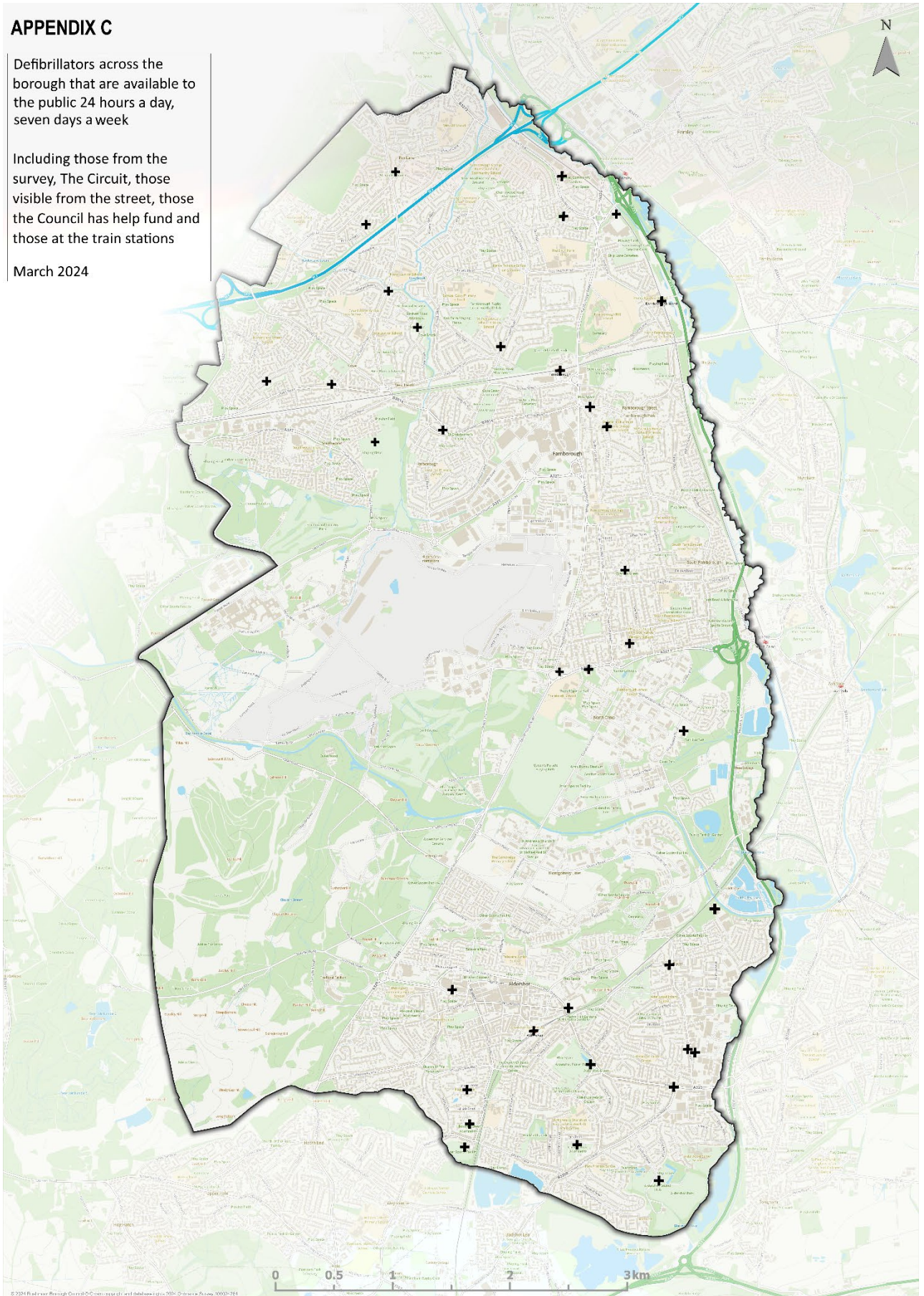


APPENDIX C

Defibrillators across the borough that are available to the public 24 hours a day, seven days a week

Including those from the survey, The Circuit, those visible from the street, those the Council has help fund and those at the train stations

March 2024



APPENDIX D – DEFIBRILLATOR NEEDS ASSESSMENT

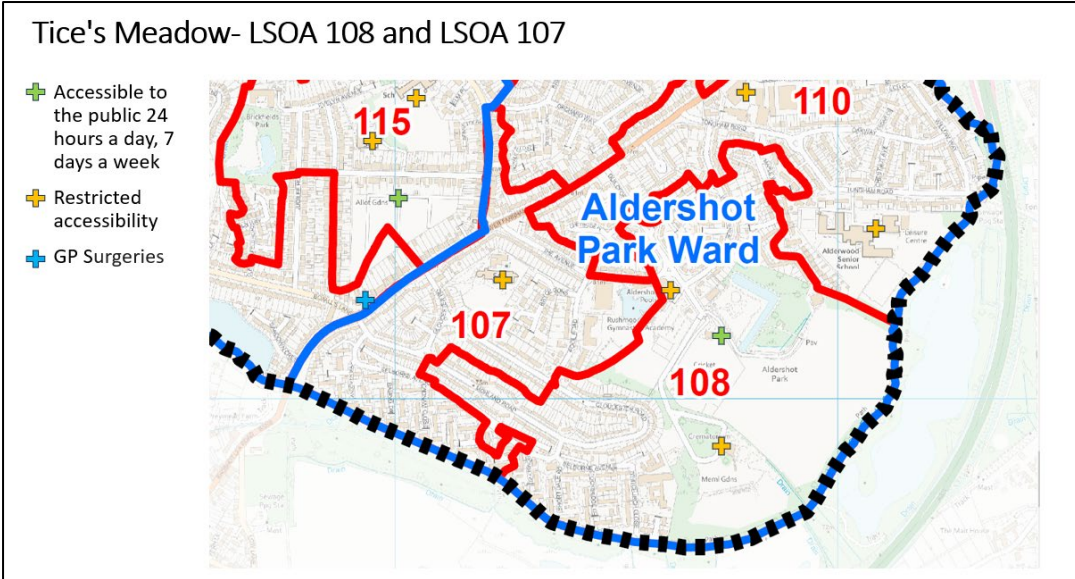
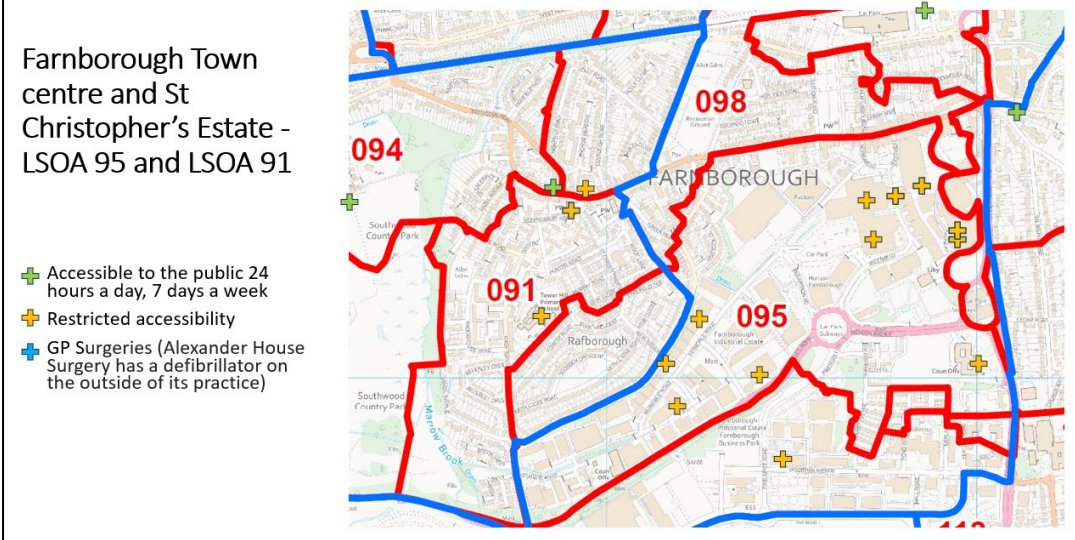
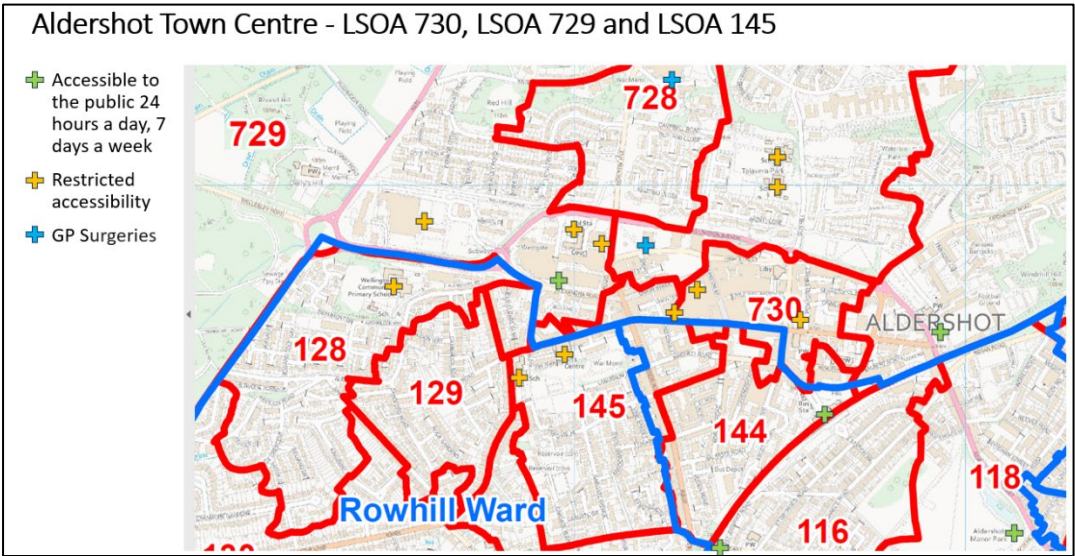
***Areas of multiple deprivation.**

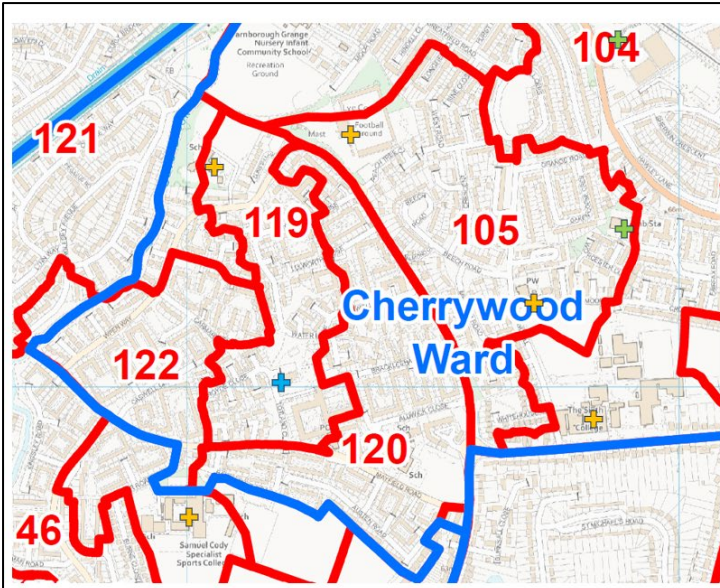
Note: After the 2021 Census LSOA 142 (an area of multiple deprivation) was split into LSOA 727 and 730. An assumption has been made that the deprivation will be worse in LSOA 730 (in/near to Aldershot town centre), than in 727 (mainly Army housing and Wellesley).

| | 2019 IMD | Health deprivation score | Number of old people - plus 65 | Nature of place | |
|----------------------------------|----------|--------------------------|--------------------------------|-----------------|-------|
| LSOA | Rank | Rank | Rank | Rank | Total |
| 730 - Aldershot TC | 5 | 4 | 4 | 5 | 18 |
| 145 - Aldershot TC | 4 | 3 | 5 | 5 | 17 |
| 108 – Aldershot Park | 5 | 5 | 4 | 3 | 17 |
| 091 – St Christopher’s Estate | 4 | 5 | 3 | 4 | 16 |
| 858 – North Town | 4 | 4 | 3 | 5 | 16 |
| 107 – Aldershot Park | 4 | 5 | 4 | 3 | 16 |
| 119 – Totland area Cherrywood | 5 | 5 | 3 | 2 | 15 |
| 095 - Farnborough TC | 3 | 3 | 4 | 5 | 15 |
| 099 – Fernhill ward | 3 | 4 | 4 | 4 | 15 |
| 729 - Aldershot TC | 3 | 4 | 2 | 5 | 14 |
| 140 - North Camp Village | 3 | 4 | 2 | 5 | 14 |
| 105 – Cherrywood ward | 4 | 4 | 4 | 2 | 14 |
| 131 – Rowhill ward | 2 | 4 | 5 | 3 | 14 |
| 106 | 4 | 4 | 3 | 2 | 13 |
| 120 | 4 | 3 | 4 | 2 | 13 |
| 132 | 2 | 3 | 4 | 4 | 13 |
| 139 | 3 | 4 | 3 | 3 | 13 |
| 118 | 3 | 3 | 3 | 4 | 13 |
| 104 | 3 | 2 | 4 | 3 | 12 |
| 121 | 4 | 3 | 5 | 0 | 12 |
| 146 | 4 | 4 | 3 | 1 | 12 |
| 103 | 2 | 1 | 4 | 5 | 12 |
| 098 | 2 | 2 | 4 | 4 | 12 |
| 149 | 2 | 3 | 4 | 3 | 12 |
| 113 | 2 | 4 | 4 | 2 | 12 |
| 137 | 2 | 3 | 3 | 4 | 12 |
| 144 | 4 | 3 | 4 | 1 | 12 |
| 109 | 2 | 3 | 4 | 3 | 12 |
| 122 | 4 | 4 | 3 | 0 | 11 |
| 096 | 1 | 1 | 5 | 4 | 11 |
| 135 | 3 | 2 | 4 | 2 | 11 |
| 141 | 2 | 4 | 1 | 4 | 11 |
| 128 | 3 | 4 | 4 | 0 | 11 |

| | | | | | |
|-----|---|---|---|---|----|
| 129 | 3 | 4 | 3 | 1 | 11 |
| 110 | 3 | 4 | 4 | 0 | 11 |
| 093 | 1 | 1 | 4 | 4 | 10 |
| 094 | 1 | 2 | 4 | 3 | 10 |
| 114 | 1 | 2 | 3 | 4 | 10 |
| 138 | 3 | 3 | 3 | 1 | 10 |
| 116 | 2 | 2 | 3 | 3 | 10 |
| 117 | 1 | 2 | 5 | 2 | 10 |
| 100 | 2 | 4 | 2 | 1 | 9 |
| 147 | 1 | 2 | 4 | 2 | 9 |
| 092 | 1 | 1 | 3 | 4 | 9 |
| 148 | 1 | 2 | 4 | 2 | 9 |
| 136 | 1 | 2 | 3 | 3 | 9 |
| 727 | 3 | 2 | 2 | 2 | 9 |
| 125 | 2 | 2 | 4 | 1 | 9 |
| 115 | 1 | 2 | 4 | 2 | 9 |
| 123 | 2 | 2 | 3 | 2 | 9 |
| 101 | 1 | 2 | 4 | 1 | 8 |
| 102 | 1 | 2 | 4 | 1 | 8 |
| 097 | 1 | 2 | 4 | 1 | 8 |
| 130 | 1 | 1 | 4 | 2 | 8 |
| 111 | 1 | 1 | 5 | 0 | 7 |
| 728 | 2 | 3 | 1 | 1 | 7 |
| 124 | 2 | 2 | 3 | 0 | 7 |
| 112 | 1 | 1 | 3 | 1 | 6 |
| 134 | 1 | 1 | 3 | 0 | 5 |
| 133 | 1 | 1 | 3 | 0 | 5 |

APPENDIX E – MAPS SHOWING THE AREAS OF GREATEST NEED (LSOA's THAT SCORED 14 OR OVER IN THE NEEDS ASSESSMENT) AND WHERE DEFIBRILLATORS ARE LOCATED.

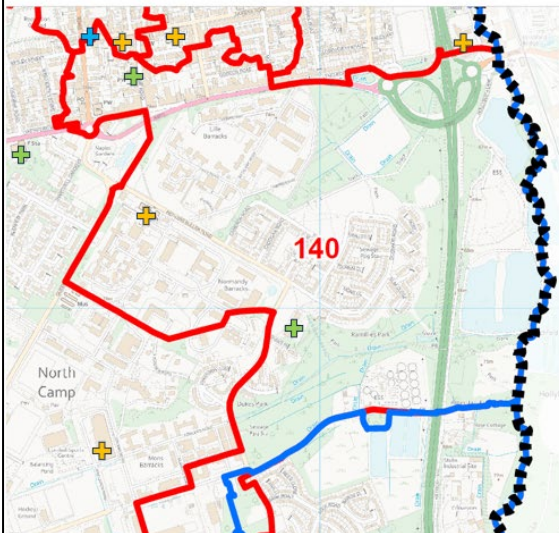




Cherrywood - LSOA 119 and LSOA 105

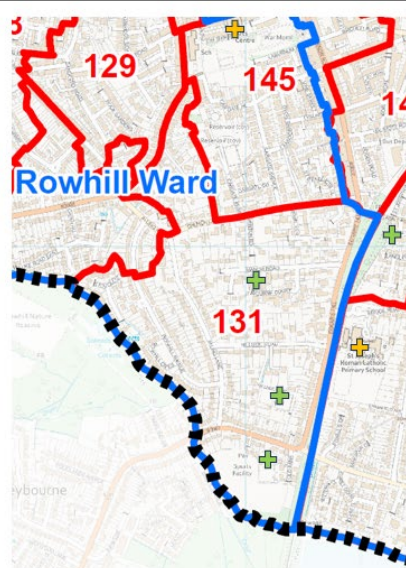
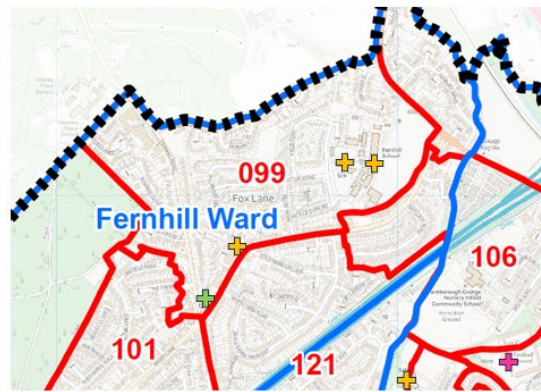
- ⊕ Accessible to the public 24 hours a day, 7 days a week
- ⊕ Restricted accessibility
- ⊕ GP Surgeries

North Camp - LSOA 140

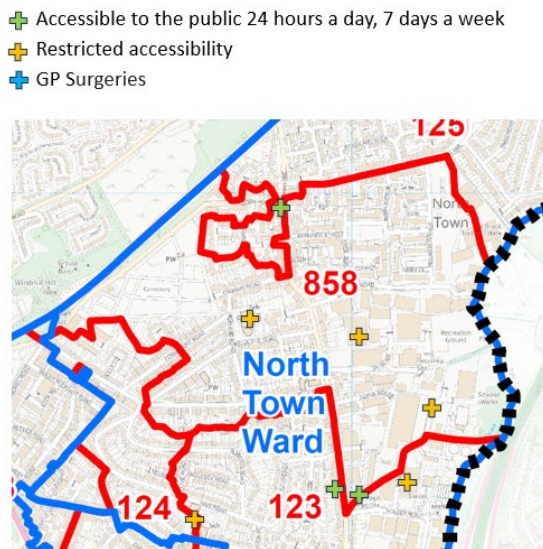


- ⊕ Accessible to the public 24 hours a day, 7 days a week
- ⊕ Restricted accessibility
- ⊕ GP Surgeries

Fernhill- LSOA 99



Rowhill - LSOA 131



North Town - LSOA 858